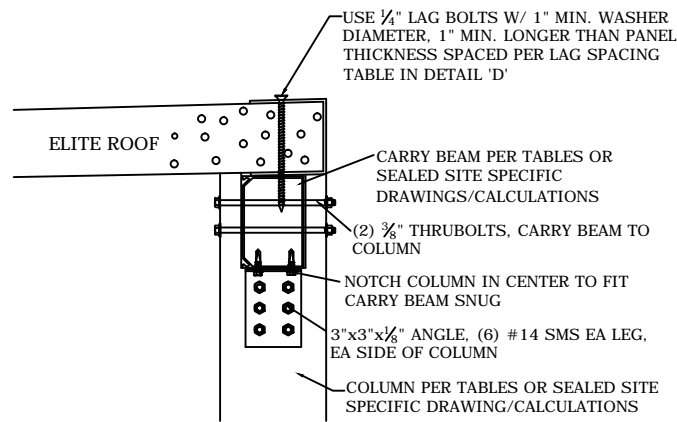


ELITE ROOF/OPEN FOURTH WALL MASTER PLAN SHEET

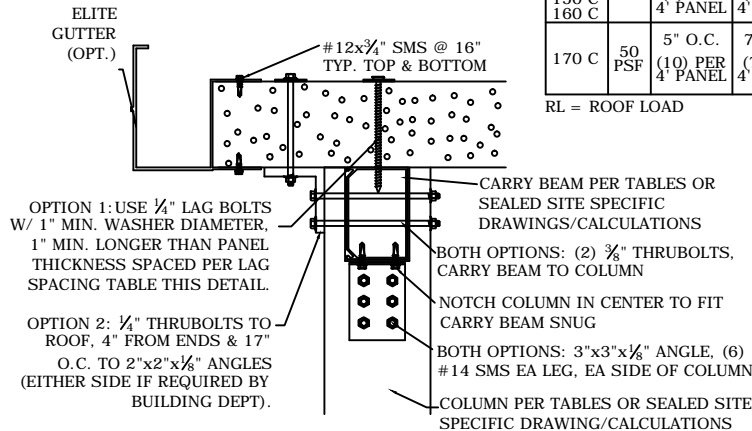
DETAILS NOT SHOWN TO SCALE FOR CLARITY.

A CONNECTION @ MANUFACTURED HOME



D SECTION AT BEARING COLUMN

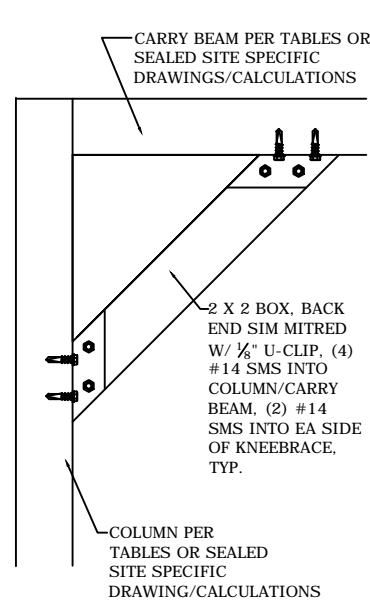
**SEE GENERAL NOTE #10 FOR DESIGN PARAMETERS USED IN DETAIL & LAG SPACING TABLE. REFER TO ELITE ROOF SPAN TABLE FOR MAX ROOF SPANS USED. SITE SPECIFIC CALCULATIONS MAY YIELD GREATER SPACING.



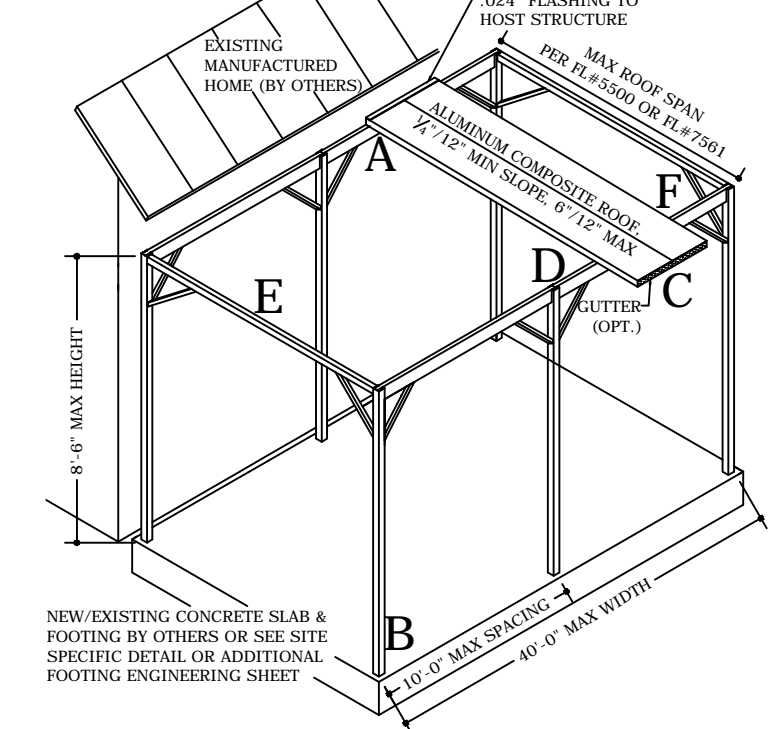
VEL & EXP	LAG SPACING TABLE		
	RL	4", 0.024"	4", 0.032"
120 B	21 PSF	9" O.C.	11" O.C.
130 B			
140 B			
150 B			
160 B	28 PSF	7" O.C.	9" O.C.
120 C			
130 C			
140 C			
150 C	50 PSF	5" O.C.	7" O.C.
160 C			

RL = ROOF LOAD

G KNEEBRACE DETAIL

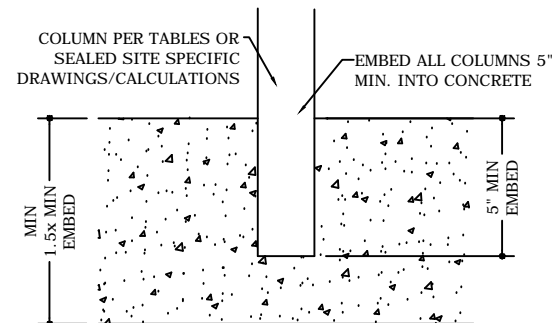


ELITE ROOF OPEN PATIO



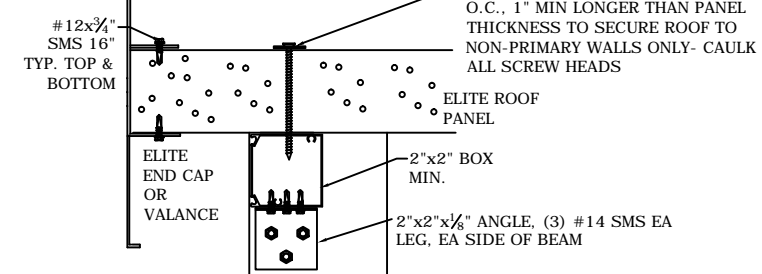
B POST TO CONCRETE DECK DETAIL

**SEE GENERAL NOTE #10 FOR LIMITATIONS

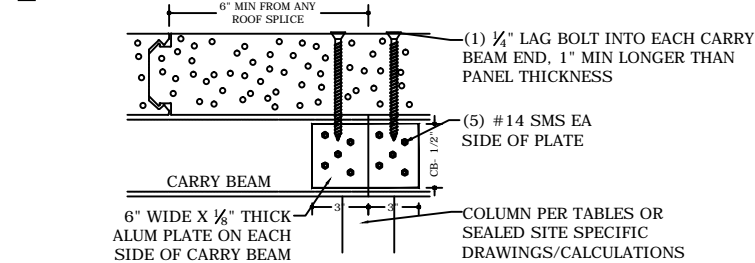


NEW/EXISTING CONCRETE SLAB & FOOTING BY OTHERS OR SEE SITE SPECIFIC DETAIL OR ADDITIONAL FOOTING ENGINEERING SHEET

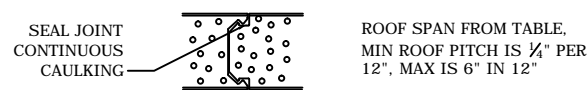
E SECTION AT SIDE OF ROOF PANEL



F BEAM SPLICE OVER COLUMN

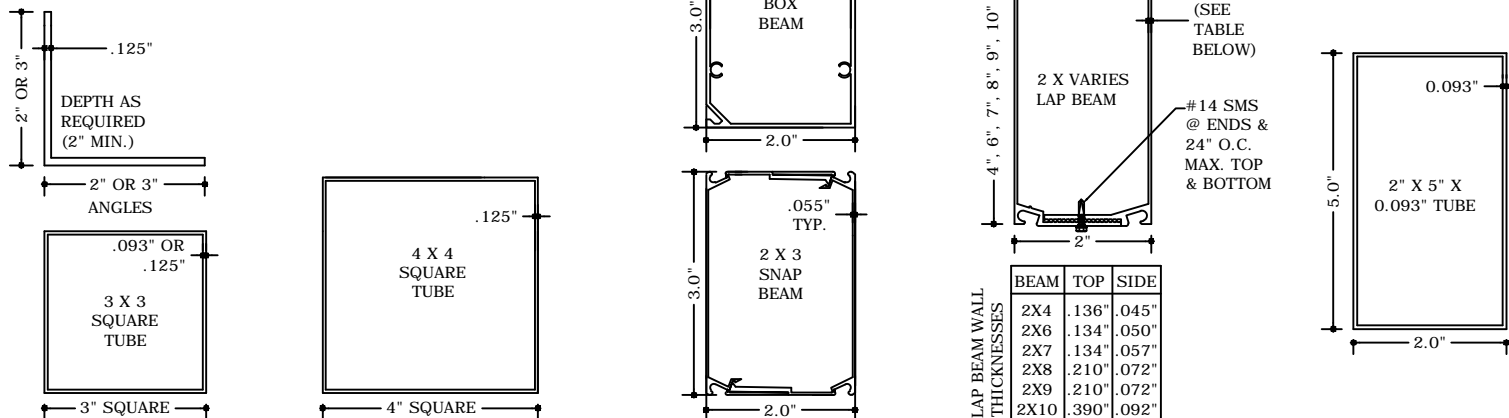


C ROOF PANEL CONNECTION FRONT ELEVATION



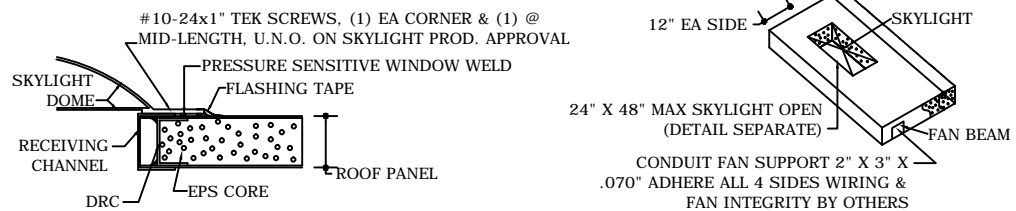
EXTRUSIONS:

VERIFY FIELD EXTRUSION DIMENSIONS WITH DESIGN DIMENSIONS PRIOR TO USE. ALTERNATE ENGINEERING WILL BE REQUIRED FOR DIMENSIONS LESS THAN THOSE AS SPECIFIED HEREIN. ALL EXTRUSIONS TO BE 6063-T6 ALUMINUM.



ROOF PANEL ACCESSORIES:

NOTE: CERTIFICATION OF SKYLIGHT BY SEPARATE CERTIFICATION. DETAIL ILLUSTRATES TYPICAL CONNECTION METHODS ONLY. REFER TO SKYLIGHT DETAILS FOR FURTHER INFORMATION WHICH GOVERNS.



GENERAL NOTES:

- THIS STRUCTURE HAS BEEN DESIGNED & COMPLIES WITH THE REQUIREMENTS OF THE 2010 FLORIDA BUILDING CODE. STRUCTURE SHALL BE FABRICATED IN ACCORDANCE WITH ALL GOVERNING CODES. CONTRACTOR SHALL INVESTIGATE AND CONFORM TO ALL LOCAL BUILDING CODE AMENDMENTS WHICH MAY APPLY. DESIGN CRITERIA OR SPANS BEYOND STATED HEREIN MAY REQUIRE ADDITIONAL SITE SPECIFIC SEALED ENGINEERING. ALL LOADS BASED ON CATEGORY I, Kd=0.85, OPEN (Gcpi= +/-0.18), 15' MRH PER FBC TABLE 2002.4(1). AND ASCE 7-10 AS APPLICABLE. ** THIS DOCUMENT SHALL NOT BE USED OR REPRODUCED WITHOUT THE ORIGINAL SIGNATURE & RAISED SEAL OF C.T. "GUS" TARNOWSKI, P.E. & MUST HAVE 'ELITE' IN RED ACROSS THE FACE OF THIS DRAWING. ALTERATIONS, ADDITIONS, HIGHLIGHTING, OR OTHER MARKINGS TO THIS DOCUMENT ARE NOT PERMITTED AND INVALIDATE OUR CERTIFICATION.
- COMPOSITE ROOF MEMBERS SHALL BE CONSTRUCTED USING MINIMUM TYPE 3005-H25 ALUMINUM FACINGS, (1) OR (2) PCF ASTM C-578-83 CARPENTER BRAND EPS ADHERE TO ALUMINUM FACINGS WITH ASHLAND CHEMICAL 2020D ISO GRIP. FABRICATION TO BE BY ELITE PANEL PRODUCTS ONLY IN ACCORDANCE WITH APPROVED FABRICATION METHODS.
- ALL EXTRUSIONS SHALL BE ALUMINUM ALLOY TYPE 6063-T6 ONLY.
- ALL FASTENERS TO BE 2024-T4 OR 7075-T73 ALLOY, NON-MAGNETIC STAINLESS STEEL, SAE GRADE 5 STEEL MIN. OR CADMIUM PLATED OR OTHER CORROSION RESISTANT MATERIAL AND SHALL COMPLY WITH 5.1.1.C, 2005 ALUMINUM DESIGN MANUAL- SECTION 1, THE ALUMINUM ASSOCIATION, INC., & APPLICABLE FEDERAL, STATE, AND LOCAL CODES.
- FASTENERS SHALL HAVE A HEAD AND/OR BE PROVIDED WITH 1/2" DIAMETER WASHER MINIMUM UNLESS NOTED OTHERWISE.
- ALL CONNECTIONS SHALL BE BOLTED OR FASTENED WITH SHEET METAL SCREWS AS SHOWN AND IN ACCORDANCE WITH PROPER FASTENING METHODS AND CODES. ANY FASTENER STRIPPED OR NOT ADEQUATELY HOLDING SHALL BE REPLACED.
- THE CONTRACTOR IS RESPONSIBLE TO INSULATE ALUMINUM MEMBERS FROM DISSIMILAR METALS TO PREVENT ELECTROLYSIS.
- ALL TAPCONS MUST BE ITW CARBON STEEL TAPCONS OR EQUIVALENT W/ 1/4" EMBED, 3" MIN. EDGE DISTANCE, FASTENED TO MINIMUM 3192PSI CONCRETE.
- MAXIMUM COLUMN SPACING = 10FT, MAX COLUMN HEIGHT = 8.5FT, MAX LIVE LOAD = 30PSF, MAX WIND VELOCITY & EXPOSURE = 170MPH, 'C', CONNECTIONS VALID UP TO MAX 6IN. ROOF SPAN PER ELITE ROOF FLORIDA STATEWIDE APPROVED SPAN TABLE. SITE SPECIFIC ENGINEERING REQUIRED FOR ANY DETAIL WHICH DEVIATES FROM THIS PLAN OR BEYOND THESE LIMITATIONS.
- ENGINEER SEAL AFFIXED HERETO VALIDATES STRUCTURAL DESIGN AS SHOWN ONLY. USE OF THIS SPECIFICATION BY CONTRACTOR, et al. INDEMNIFIES AND SAVES HARMLESS THIS ENGINEER FOR ALL COSTS AND DAMAGES INCLUDING LEGAL FEES AND APPELLATE FEES RESULTING FROM MATERIAL FABRICATION, SYSTEM ERECTION, AND CONSTRUCTION PRACTICES BEYOND THAT WHICH IS CALLED FOR BY LOCAL, STATE, AND FEDERAL CODES AND FROM DEVIATIONS OF THIS PLAN.
- EXCEPT AS EXPRESSLY PROVIDED IN THIS SPECIFICATION, NO ADDITIONAL CERTIFICATIONS OR AFFIRMATIONS ARE INTENDED.

C.T. "GUS" TARNOWSKI
PE0050662



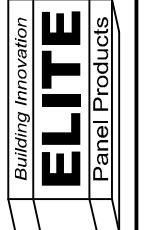
VALID FOR (1) JOB(S) ONLY
VALID ONLY WITH RAISED ENGINEER SEAL



ENGINEERING BUSINESS CA 00009677

CIVIL & STRUCTURAL ENGINEERING
Phone (954) 727 - 2027
Fax (954) 727 - 9644
7360 N.W. 5th Street
Plantation, FL 33317

ELITE ALUMINUM CORPORATION
4650 LYONS TECHNOLOGY PARKWAY
COCONUT CREEK, FL 33073



ELITE ROOF/OPEN FOURTH WALL MASTER PLAN

DRWN	CHKD	DATE
WTF <td>CT</td> <td>08/04/09</td>	CT	08/04/09
WTF <td>CT</td> <td>05/07/12</td>	CT	05/07/12

REMARKS	INIT	ISSUE	DATE

THIS DOCUMENT IS THE PROPERTY OF TARNOWSKI ENGINEERING, INC. WRITTEN CONSENT OF TARNOWSKI ENGINEERING, INC. IS REQUIRED FOR ANY REPRODUCTION, ALTERATIONS, HIGHLIGHTING, OR OTHER MARKINGS TO THIS DOCUMENT. ARE NOT PERMITTED AND INVALIDATE OUR CERTIFICATION.

COPYRIGHT TARNOWSKI ENGINEERING, INC.

00-EAC-1041

SCALE: N.T.S. 01

PAGE DESCRIPTION:

COLUMN ALLOWABLE HEIGHT TABLES:

TABLE 1: 120MPH, EXPOSURE 'B'

OPEN WALL COLUMN HEIGHT TABLE: MAX ROOF SPAN = 21'-1"								
COLUMN	COLUMN SPACING							
	7'-0"	7'-6"	8'-0"	8'-6"	9'-0"	9'-6"	10'-0"	
3x3x.093 BOX	10'-0"	10'-0"	10'-0"	10'-0"	10'-0"	10'-0"	10'-0"	
3x3x.125 BOX	10'-0"	10'-0"	10'-0"	10'-0"	10'-0"	10'-0"	10'-0"	
4x4x.125 BOX	10'-0"	10'-0"	10'-0"	10'-0"	10'-0"	10'-0"	10'-0"	

TABLE 4: 140MPH, EXP 'C', 150MPH, EXP 'B'

OPEN WALL COLUMN HEIGHT TABLE: MAX ROOF SPAN = 18'-3"								
COLUMN	COLUMN SPACING							
	7'-0"	7'-6"	8'-0"	8'-6"	9'-0"	9'-6"	10'-0"	
3x3x.093 BOX	10'-0"	10'-0"	10'-0"	10'-0"	10'-0"	10'-0"	10'-0"	
3x3x.125 BOX	10'-0"	10'-0"	10'-0"	10'-0"	10'-0"	10'-0"	10'-0"	
4x4x.125 BOX	10'-0"	10'-0"	10'-0"	10'-0"	10'-0"	10'-0"	10'-0"	

TABLE 7: 160MPH, EXP 'C'*

OPEN WALL COLUMN HEIGHT TABLE: MAX ROOF SPAN = 12'-9"								
COLUMN	COLUMN SPACING							
	7'-0"	7'-6"	8'-0"	8'-6"	9'-0"	9'-6"	10'-0"	
3x3x.093 BOX	10'-0"	10'-0"	10'-0"	10'-0"	10'-0"	10'-0"	10'-0"	
3x3x.125 BOX	10'-0"	10'-0"	10'-0"	10'-0"	10'-0"	10'-0"	10'-0"	
4x4x.125 BOX	10'-0"	10'-0"	10'-0"	10'-0"	10'-0"	10'-0"	10'-0"	

TABLE 2: 120MPH, EXP 'C', 130MPH, EXP 'B'

OPEN WALL COLUMN HEIGHT TABLE: MAX ROOF SPAN = 20'-5"								
COLUMN	COLUMN SPACING							
	7'-0"	7'-6"	8'-0"	8'-6"	9'-0"	9'-6"	10'-0"	
3x3x.093 BOX	10'-0"	10'-0"	10'-0"	10'-0"	10'-0"	10'-0"	10'-0"	
3x3x.125 BOX	10'-0"	10'-0"	10'-0"	10'-0"	10'-0"	10'-0"	10'-0"	
4x4x.125 BOX	10'-0"	10'-0"	10'-0"	10'-0"	10'-0"	10'-0"	10'-0"	

TABLE 5: 150MPH, EXP 'C', 160MPH, EXP 'B'

OPEN WALL COLUMN HEIGHT TABLE: MAX ROOF SPAN = 17'-4"								
COLUMN	COLUMN SPACING							
	7'-0"	7'-6"	8'-0"	8'-6"	9'-0"	9'-6"	10'-0"	
3x3x.093 BOX	10'-0"	10'-0"	10'-0"	10'-0"	10'-0"	10'-0"	10'-0"	
3x3x.125 BOX	10'-0"	10'-0"	10'-0"	10'-0"	10'-0"	10'-0"	10'-0"	
4x4x.125 BOX	10'-0"	10'-0"	10'-0"	10'-0"	10'-0"	10'-0"	10'-0"	

TABLE 8: 170MPH, EXP 'C'*

OPEN WALL COLUMN HEIGHT TABLE: MAX ROOF SPAN = 12'-9"								
COLUMN	COLUMN SPACING							
	7'-0"	7'-6"	8'-0"	8'-6"	9'-0"	9'-6"	10'-0"	
3x3x.093 BOX	10'-0"	10'-0"	10'-0"	10'-0"	10'-0"	10'-0"	10'-0"	
3x3x.125 BOX	10'-0"	10'-0"	10'-0"	10'-0"	10'-0"	10'-0"	10'-0"	
4x4x.125 BOX	10'-0"	10'-0"	10'-0"	10'-0"	10'-0"	10'-0"	10'-0"	

TABLE 3: 130MPH, EXP 'C', 140MPH, EXP 'B'

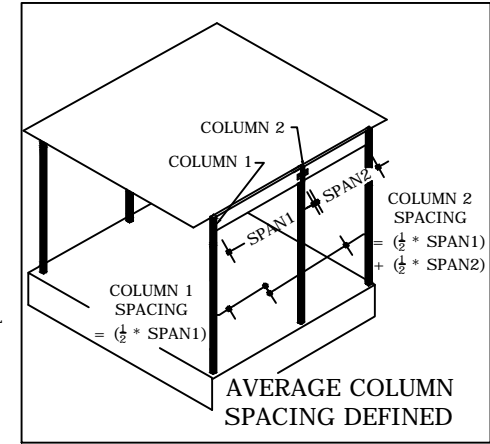
OPEN WALL COLUMN HEIGHT TABLE: MAX ROOF SPAN = 19'-4"								
COLUMN	COLUMN SPACING							
	7'-0"	7'-6"	8'-0"	8'-6"	9'-0"	9'-6"	10'-0"	
3x3x.093 BOX	10'-0"	10'-0"	10'-0"	10'-0"	10'-0"	10'-0"	10'-0"	
3x3x.125 BOX	10'-0"	10'-0"	10'-0"	10'-0"	10'-0"	10'-0"	10'-0"	
4x4x.125 BOX	10'-0"	10'-0"	10'-0"	10'-0"	10'-0"	10'-0"	10'-0"	

TABLE 6: 160MPH, EXP 'C'

OPEN WALL COLUMN HEIGHT TABLE: MAX ROOF SPAN = 17'-8"								
COLUMN	COLUMN SPACING							
	7'-0"	7'-6"	8'-0"	8'-6"	9'-0"	9'-6"	10'-0"	
3x3x.093 BOX	10'-0"	10'-0"	10'-0"	10'-0"	10'-0"	10'-0"	10'-0"	
3x3x.125 BOX	10'-0"	10'-0"	10'-0"	10'-0"	10'-0"	10'-0"	10'-0"	
4x4x.125 BOX	10'-0"	10'-0"	10'-0"	10'-0"	10'-0"	10'-0"	10'-0"	

TABLE 1-8 NOTES:

- 2005 ALUMINUM DESIGN MANUAL, ALLOWABLE STRESS DESIGN METHOD USED IN ALL TABLES.
- USE APPROPRIATE TABLE REQUIRED BY THE FLORIDA BUILDING CODE & GOVERNING LOCAL BUILDING CODES. VERIFY REQUIREMENTS WITH BUILDING DEPARTMENT.
- DEFLECTION LIMIT = L/120.
- MAXIMUM OPEN WALL COLUMN HEIGHTS NOTED IN TABLES 1-8.
- THE GREATER OF 10PSF ROOF LIVE LOAD OR ROOF WINDLOAD (MWFRS) USED *
- COLUMN SPACING IS HALF THE DISTANCE TO THE LEFT ADDED TO HALF THE DISTANCE TO THE RIGHT OF THE BEAM (AVERAGE COLUMN SPACING).
- *HVHZ ONLY. MINIMUM SOLID ROOF LIVE LOAD = 30PSF
- ALL WIND SPEEDS SHOWN ARE BASED ON ULTIMATE DESIGN WIND SPEEDS (Vult)



END WALL/4TH WALL CARRY BEAM CLEAR SPAN TABLES

TABLE 9: 120MPH, EXPOSURE 'B'

OPEN WALL CARRY BEAM SPAN TABLE:								
BEAM	ROOF CLEAR SPAN							
	8'-0"	10'-0"	12'-0"	14'-0"	16'-0"	18'-0"	22'-0"	
2x3 SNAP	8'-2"	8'-1"	7'-7"	7'-1"	6'-9"	6'-6"	5'-10"	
2x3x.097 BOX	7'-8"	7'-3"	7'-0"	6'-8"	6'-6"	6'-3"	5'-10"	
2x4 LAP	10'-0"	10'-0"	10'-0"	9'-8"	9'-2"	8'-9"	8'-1"	
2x5x.093 BOX	10'-0"	10'-0"	10'-0"	10'-0"	10'-0"	10'-0"	9'-9"	
2x5 LAP	10'-0"	10'-0"	10'-0"	10'-0"	10'-0"	10'-0"	10'-0"	
2x6 LAP	10'-0"	10'-0"	10'-0"	10'-0"	10'-0"	10'-0"	10'-0"	
2x7 LAP	10'-0"	10'-0"	10'-0"	10'-0"	10'-0"	10'-0"	10'-0"	
2x8 LAP	10'-0"	10'-0"	10'-0"	10'-0"	10'-0"	10'-0"	10'-0"	
2x9 LAP	10'-0"	10'-0"	10'-0"	10'-0"	10'-0"	10'-0"	10'-0"	
2x10 LAP	10'-0"	10'-0"	10'-0"	10'-0"	10'-0"	10'-0"	10'-0"	

TABLE 10: 120MPH, EXP 'C', 130MPH, EXP 'B'

OPEN WALL CARRY BEAM SPAN TABLE:								
BEAM	ROOF CLEAR SPAN							
	8'-0"	10'-0"	12'-0"	14'-0"	16'-0"	18'-0"	22'-0"	
2x3 SNAP	7'-4"	6'-9"	6'-4"	6'-0"	5'-8"	5'-4"	5'-0"	
2x3x.097 BOX	6'-10"	6'-6"	6'-2"	6'-0"	5'-9"	5'-7"	5'-3"	
2x4 LAP	10'-0"	9'-3"	8'-8"	8'-2"	7'-9"	7'-4"	6'-9"	
2x5x.093 BOX	10'-0"	10'-0"	10'-0"	10'-0"	9'-6"	9'-0"	8'-3"	
2x5 LAP	10'-0"	10'-0"	10'-0"	10'-0"	10'-0"	9'-9"	9'-0"	
2x6 LAP	10'-0"	10'-0"	10'-0"	10'-0"	10'-0"	10'-0"	9'-2"	
2x7 LAP	10'-0"	10'-0"	10'-0"	10'-0"	10'-0"	10'-0"	10'-0"	
2x8 LAP	10'-0"	10'-0"	10'-0"	10'-0"	10'-0"	10'-0"	10'-0"	
2x9 LAP	10'-0"	10'-0"	10'-0"	10'-0"	10'-0"	10'-0"	10'-0"	
2x10 LAP	10'-0"	10'-0"	10'-0"	10'-0"	10'-0"	10'-0"	10'-0"	

TABLE 11: 130MPH, EXP 'C', 140MPH, EXP 'B'

OPEN WALL CARRY BEAM SPAN TABLE:								
BEAM	ROOF CLEAR SPAN							
	8'-0"	10'-0"	12'-0"	14'-0"	16'-0"	18'-0"	20'-0"	
2x3 SNAP	7'-4"	6'-9"	6'-4"	6'-0"	5'-8"	5'-4"	5'-2"	
2x3x.097 BOX	6'-10"	6'-6"	6'-2"	6'-0"	5'-9"	5'-7"	5'-4"	
2x4 LAP	10'-0"	9'-3"	8'-8"	8'-2"	7'-9"	7'-4"	7'-1"	
2x5x.093 BOX	10'-0"	10'-0"	10'-0"	10'-0"	9'-6"	9'-0"	8'-7"	
2x5 LAP	10'-0"	10'-0"	10'-0"	10'-0"	10'-0"	9'-9"	9'-4"	
2x6 LAP	10'-0"	10'-0"	10'-0"	10'-0"	10'-0"	10'-0"	9'-7"	
2x7 LAP	10'-0"	10'-0"	10'-0"	10'-0"	10'-0"	10'-0"	10'-0"	
2x8 LAP	10'-0"	10'-0"	10'-0"	10'-0"	10'-0"	10'-0"	10'-0"	
2x9 LAP	10'-0"	10'-0"	10'-0"	10'-0"	10'-0"	10'-0"	10'-0"	
2x10 LAP	10'-0"	10'-0"	10'-0"	10'-0"	10'-0"	10'-0"	10'-0"	

TABLE 12: 140MPH, EXP 'C', 150MPH, EXP 'B'

OPEN WALL CARRY BEAM SPAN TABLE:								
BEAM	ROOF CLEAR SPAN							
	8'-0"	10'-0"	12'-0"	14'-0"	16'-0"	18'-0"	19'-0"	
2x3 SNAP	6'-6"	6'-0"	5'-7"	5'-3"	5'-0"	4'-9"	4'-8"	
2x3x.097 BOX	6'-3"	6'-0"	5'-8"	5'-6"	5'-3"	5'-2"	5'-1"	
2x4 LAP	8'-10"	8'-2"	7'-8"	6'-9"	6'-6"	6'-4"	6'-4"	
2x5x.093 BOX	10'-0"	10'-0"	9'-3"	8'-9"	8'-3"	8'-0"	7'-9"	
2x5 LAP	10'-0"	10'-0"	10'-0"	9'-6"	9'-0"	8'-7"	8'-4"	
2x6 LAP	10'-0"	10'-0"	10'-0"	9'-9"	9'-3"	8'-9"	8'-7"	
2x7 LAP	10'-0"	10'-0"	10'-0"	10'-0"	10'-0"	9'-10"	9'-8"	
2x8 LAP	10'-0"	10'-0"	10'-0"	10'-0"	10'-0"	10'-0"	10'-0"	
2x9 LAP	10'-0"	10'-0"	10'-0"	10'-0"	10'-0"	10'-0"	10'-0"	
2x10 LAP	10'-0"	10'-0"	10'-0"	10'-0"	10'-0"	10'-0"	10'-0"	

TABLE 13: 150MPH, EXP 'C', 160MPH, EXP 'B'

OPEN WALL CARRY BEAM SPAN TABLE:								
BEAM	ROOF CLEAR SPAN							
	8'-0"	10'-0"	12'-0"	14'-0"	16'-0"	17'-0"	18'-0"	
2x3 SNAP	6'-0"	5'-7"	5'-2"	4'-10"	4'-8"	4'-6"	4'-4"	
2x3x.097 BOX	6'-0"	5'-8"	5'-4"	5'-2"	5'-1"	5'-0"	4'-10"	
2x4 LAP	8'-2"	7'-7"	7'-1"	6'-8"	6'-3"	6'-2"	6'-0"	
2x5x.093 BOX	10'-0"	9'-2"	8'-7"	8'-1"	7'-8"	7'-6"	7'-4"	
2x5 LAP	10'-0"	10'-0"	9'-4"	8'-9"	8'-4"	8'-2"	8'-0"	
2x6 LAP	10'-0"	10'-0"	9'-7"	9'-0"	8'-7"	8'-4"	8'-2"	
2x7 LAP	10'-0"	10'-0"	10'-0"	10'-0"	9'-7"	9'-4"	9'-2"	
2x8 LAP	10'-0"	10'-0"	10'-0"	10'-0"	10'-0"	10'-0"	10'-0"	
2x9 LAP	10'-0"	10'-0"	10'-0"	10'-0"	10'-0"	10'-0"	10'-0"	
2x10 LAP	10'-0"	10'-0"	10'-0"	10'-0"	10'-0"	10'-0"	10'-0"	

TABLE 14: 160MPH, EXP 'C'

OPEN WALL CARRY BEAM SPAN TABLE:								
BEAM	ROOF CLEAR SPAN							
	8'-0"	10'-0"	12'-0"	14'-0"	16'-0"	17'-0"	18'-0"	
2x3 SNAP	5'-7"	5'-2"	4'-10"	4'-7"	4'-4"	4'-2"	4'-1"	
2x3x.097 BOX	5'-8"	5'-4"	5'-2"	5'-0"	4'-9"	4'-9"	4'-8"	
2x4 LAP	7'-8"	7'-1"	6'-7"	6'-2"	5'-10"	5'-9"	5'-7"	
2x5x.093 BOX	9'-3"	8'-7"	8'-1"	7'-7"	7'-2"	7'-0"	6'-10"	
2x5 LAP	10'-0"	9'-4"	8'-9"	8'-3"	7'-9"	7'-7"	7'-6"	
2x6 LAP	10'-0"	9'-7"	9'-0"	8'-4"	8'-0"	7'-9"	7'-7"	
2x7 LAP	10'-0"	10'-0"	10'-0"	9'-6"	9'-0"	8'-9"	8'-7"	
2x8 LAP	10'-0"	10'-0"	10'-0"	10'-0"	10'-0"	10'-0"	10'-0"	
2x9 LAP	10'-0"	10'-0"	10'-0"	10'-0"	10'-0"	10'-0"	10'-0"	
2x10 LAP	10'-0"	10'-0"	10'-0"	10'-0"	10'-0"	10'-0"	10'-0"	

TABLE 15: 160MPH, EXP 'C'*

OPEN WALL CARRY BEAM SPAN TABLE:								
BEAM	ROOF CLEAR SPAN							
	7'-0"	8'-0"	9'-0"	10'-0"	11'-0"	12'-0"	13'-0"	
2x3 SNAP	4'-4"	4'-2"	4'-0"	3'-10"	3'-8"	3'-7"	3'-6"	
2x3x.097 BOX	5'-7"	5'-4"	5'-2"	5'-0"	4'-10"	3'-8"	3'-8"	
2x4 LAP	6'-0"	5'-8"	5'-6"	5'-3"	5'-1"	4'-10"	4'-9"	
2x5x.093 BOX	7'-3"	7'-0"	6'-8"	6'-4"	6'-2"	6'-0"	5'-9"	
2x5 LAP	7'-10"	7'-6"	7'-3"	7'-0"	6'-8"	6'-6"	6'-3"	
2x6 LAP	8'-1"	7'-8"	7'-4"	7'-2"	6'-10"	6'-8"	6'-6"	
2x7 LAP	9'-1"	8'-8"	8'-3"	8'-0"	7'-9"	7'-6"	7'-3"	
2x8 LAP	10'-0"	10'-0"	10'-0"	10'-0"	9'-9"	9'-6"	9'-2"	
2x9 LAP	10'-0"	10'-0"	10'-0"	10'-0"	10'-0"	10'-0"	10'-0"	
2x10 LAP	10'-0"	10'-						