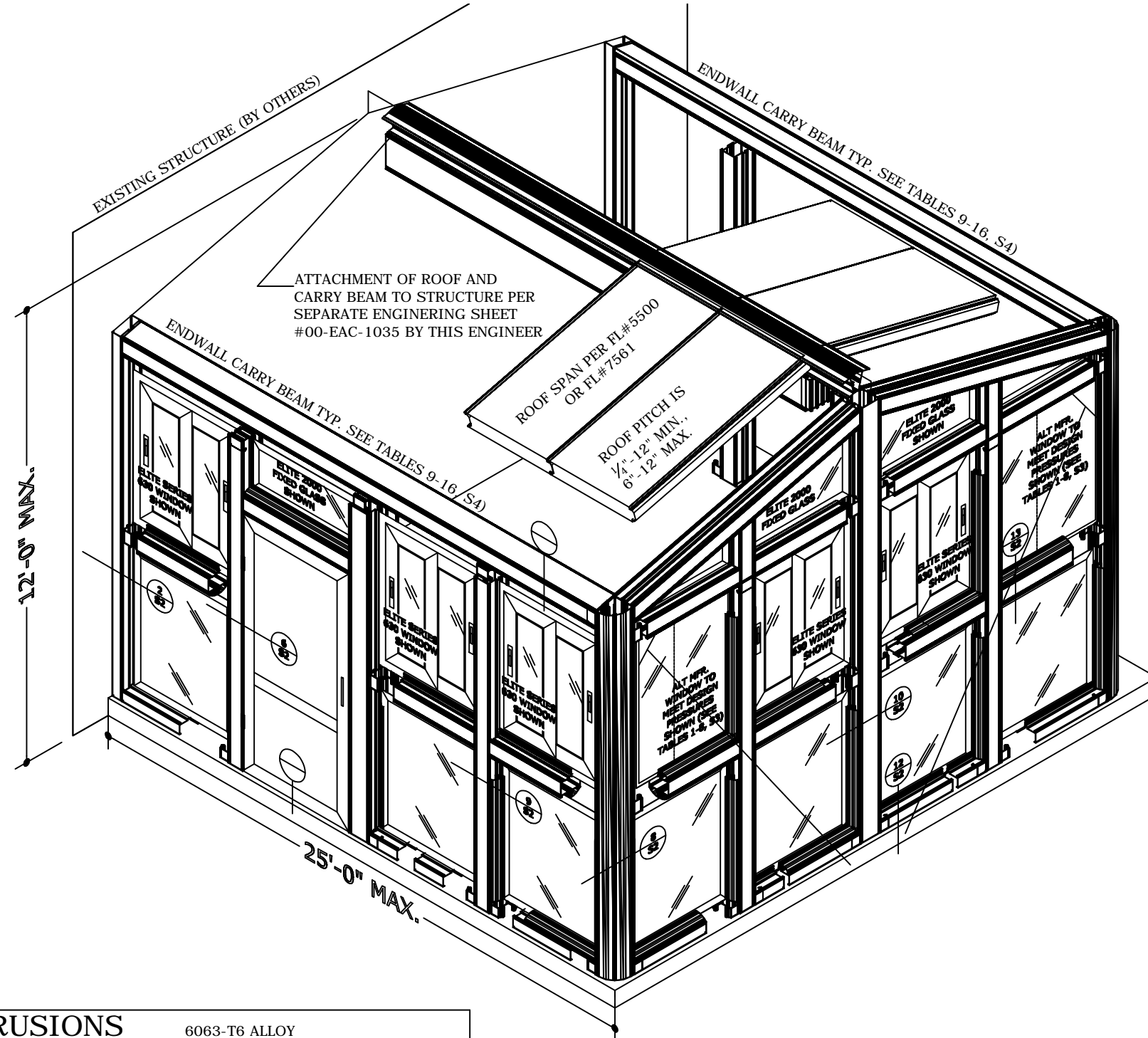


ELITE 2000 GABLE GLASS SYSTEM



GENERAL NOTES:

- THIS STRUCTURE HAS BEEN DESIGNED & COMPLIES WITH THE REQUIREMENTS OF THE 2007 FLORIDA BUILDING CODE WITH 2009 SUPPLEMENTS. STRUCTURE SHALL BE FABRICATED IN ACCORDANCE WITH ALL GOVERNING CODES. CONTRACTOR SHALL INVESTIGATE AND CONFORM TO ALL LOCAL BUILDING CODE AMENDMENTS WHICH MAY APPLY. DESIGN CRITERIA OR SPANS BEYOND STATED HEREIN MAY REQUIRE ADDITIONAL SITE SPECIFIC SEALED ENGINEERING. ALL LOADS BASED ON CATEGORY II (I=1.0) Kd=0.85, ENCLOSED (Gcpi= +/-0.18), 15' MRH PER FBC TABLE 2002.4(1). AND ASCE 7-05 AS APPLICABLE. THIS ENCLOSURE HAS BEEN DESIGNED FOR CATEGORIES II OR III PER AAMA/NPEA/NSA 2100-02.
 - ** THIS DOCUMENT SHALL NOT BE USED OR REPRODUCED WITHOUT THE ORIGINAL SIGNATURE & RAISED SEAL OF C.T. "GUS" TARNOWSKI, P.E. & MUST HAVE 'ELITE' IN RED ACROSS THE FACE OF THIS DRAWING. ALTERATIONS, ADDITIONS, HIGHLIGHTING, OR OTHER MARKINGS TO THIS DOCUMENT ARE NOT PERMITTED AND INVALIDATE OUR CERTIFICATION.
- THE EXISTING STRUCTURE MUST BE CAPABLE OF SUPPORTING THE LOADED COMPOSITE ROOF-GLASS WALL STRUCTURE AS DETERMINED BY OTHERS OR BY SPECIAL ENGINEERING BY UNDERSIGNED ENGINEER ATTACHED HERETO. NO WARRANTY IS CONTAINED HEREIN.
- COMPOSITE ROOF AND WALL MEMBERS SHALL BE CONSTRUCTED USING MINIMUM TYPE 3005-H25 ALUMINUM FACINGS, (1) OR (2) PCF ASTM C-578-83 CARPENTER BRAND EPS ADHERE TO ALUMINUM FACINGS WITH ASHLAND CHEMICAL 2020D ISO GRIP. FABRICATION TO BE BY ELITE PANEL PRODUCTS ONLY IN ACCORDANCE WITH APPROVED FABRICATION METHODS.
- ALL EXTRUSIONS SHALL BE ALUMINUM ALLOY TYPE 6063-T6 ONLY.
- ALL FASTENERS TO BE 2024-T4 OR 7075-T73 ALLOY, NON-MAGNETIC STAINLESS STEEL, SAE GRADE 5 STEEL MIN, OR CADMIUM PLATED OR OTHER CORROSION RESISTANT MATERIAL AND SHALL COMPLY WITH 2005 ALUMINUM DESIGN MANUAL- SECTION 5, THE ALUMINUM ASSOCIATION, INC., & APPLICABLE FEDERAL, STATE, AND LOCAL CODES.
- FASTENERS SHALL HAVE A HEAD AND/OR BE PROVIDED WITH 1/2" DIAMETER WASHER MINIMUM UNLESS NOTED OTHERWISE.
- ANY FASTENER STRIPPED OR NOT ADEQUATELY HOLDING SHALL BE REPLACED.
- THE CONTRACTOR IS RESPONSIBLE TO INSULATE ALUMINUM MEMBERS FROM DISSIMILAR METALS TO PREVENT ELECTROLYSIS.
- ALL TAPCONS MUST BE ITW CARBON STEEL TAPCONS OR EQUIVALENT W/ 1 3/4" EMBED, 3" MIN. EDGE DISTANCE, FASTENED TO MINIMUM 3000PSI MIN. CONCRETE.
- IF REQUIRED BY CODE, THE EPS CORE SHALL BE SEPARATED FROM THE BUILDING INTERIOR BY A 15 MINUTE THERMAL BARRIER OF APPROVED 5/8 INCH GYPSUM WALLBOARD OR EQUAL. ELITE CAN PROVIDE UL1715 (INTERIOR) OR CLASS B(EXTERIOR) PANEL TO SATISFY CODE PROVIDED ALUM. & EPS MEET SPECS ABOVE.
- WINDOWS AND DOORS SHALL BE BY OTHERS IN ACCORDANCE WITH REQUIRED WIND PRESSURES STATED IN TABLES & SHALL MEET ALL PRODUCT APPROVAL REQUIREMENTS. THIS ENCLOSURE IS NOT IMPACT RESISTANT. SHUTTERS SHALL NOT BE INSTALLED TO THIS ENCLOSURE. WHEN REQUIRED BY CODE, AN APPROVED IMPACT PROTECTION SYSTEM SHALL BE INSTALLED AT THE HOST STRUCTURE. HOST STRUCTURE DOORS AND WINDOWS ARE NOT TO BE REMOVED EXITING TO THIS ENCLOSURE. THIS ENCLOSURE IS NON-HABITABLE SPACE.
- ALUMINUM MEMBERS IN CONTACT WITH CONCRETE & WOOD SHALL BE PROTECTED BY 'KOPPERS BITUMINOUS PAINT' OR MFR. EQUAL IN ACCORDANCE WITH APPLICABLE CODE REQUIREMENTS.
- ELECTRICAL GROUND AND ALL RELATED WIRING AND CONSIDERATIONS TO BE DESIGNED BY OTHERS AS REQUIRED.
- MAXIMUM AVG. COLUMN SPACING = 6FT, MAX COLUMN HEIGHT = 12FT, MAX LIVE LOAD = 30PSF, MAX WIND VELOCITY & EXPOSURE = 150MPH, 'C', CONNECTIONS VALID UP TO MAX 4IN. ROOF SPAN PER ELITE ROOF FLORIDA STATEWIDE APPROVED SPAN TABLE. SITE SPECIFIC ENGINEERING REQUIRED FOR ANY DETAIL WHICH DEVIATES FROM THIS PLAN OR BEYOND THESE LIMITATIONS.
- ENGINEER SEAL AFFIXED HERETO VALIDATES STRUCTURAL DESIGN AS SHOWN ONLY. USE OF THIS SPECIFICATION BY CONTRACTOR, et al. INDEMNIFIES AND SAVES HARMLESS THIS ENGINEER FOR ALL COSTS AND DAMAGES INCLUDING LEGAL FEES AND APPELLATE FEES RESULTING FROM MATERIAL FABRICATION, SYSTEM ERECTION, AND CONSTRUCTION PRACTICES BEYOND THAT WHICH IS CALLED FOR BY LOCAL, STATE, AND FEDERAL CODES AND FROM DEVIATIONS OF THIS PLAN.
- EXCEPT AS EXPRESSLY PROVIDED IN THIS SPECIFICATION, NO ADDITIONAL CERTIFICATIONS OR AFFIRMATIONS ARE INTENDED.

EXTRUSIONS

6063-T6 ALLOY

<p>1 CARRY BEAMS/ COLUMNS/ MISC</p> <p>POOL BEAM USED FOR COLUMNS ONLY</p>	<p>2 CONNECTING BRACKET</p>	<p>3 OPEN BACK</p>	<p>4 ROUNDED CLIPS</p>	<p>TAPERED CLIPS</p>	<p>5 CORNER POSTS</p>	<p>6 FLAT CONNECTOR</p>	
<p>7 DOOR JAMBS</p>	<p>8 BOTTOM DOOR SWEEP</p>	<p>9 FLAT ADAPTOR</p>	<p>10 1/2 / 12 PITCH ROOF ADAPTOR</p>	<p>11 3/2 PITCH ROOF ADAPTOR</p>	<p>12 VARIABLE DEGREE CORNER POST</p>	<p>13 45 DEGREE CORNER POST</p>	<p>14 2.5 X 2 ROUNDED POST</p>

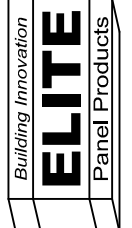
C.T. "GUS" TARNOWSKI
PE0050662



VALID FOR (1) JOB(S) ONLY
VALID ONLY WITH RAISED ENGINEER SEAL

ENGINEERING BUSINESS CA 00009677
TARNOWSKI ENGINEERING
CIVIL & STRUCTURAL ENGINEERING
7360 N.W. 5th Street Phone (954) 727 - 2027
Plantation, FL 33317 Fax (954) 727 - 9644

ELITE ALUMINUM CORPORATION
4650 LYONS TECHNOLOGY PARKWAY
COCONUT CREEK, FL 33073



ELITE 2000 GABLE - GLASS ROOM ENCLOSURE

DRWN	CHKD	DATE
WTF	CT	08/25/09
REMARKS	INIT	ISSUE

THIS DOCUMENT IS THE PROPERTY OF TARNOWSKI ENGINEERING, INC. AND SHALL NOT BE REPRODUCED OR TRANSMITTED IN ANY FORM OR BY ANY MEANS, INCLUDING PHOTOCOPYING, RECORDING, OR BY ANY INFORMATION STORAGE AND RETRIEVAL SYSTEM. ANY UNAUTHORIZED ALTERATIONS, HIGHLIGHTING, OR OTHER MARKINGS TO THIS DOCUMENT ARE NOT PERMITTED AND INVALIDATE OUR CERTIFICATION.

COPYRIGHT TARNOWSKI ENGINEERING, INC.

00-EAC-1075

SCALE: N.T.S. 01

PAGE DESCRIPTION:

