

ELITE 1 HOUR FIRE RATED PANEL ANCHORAGE

GENERAL NOTES

1) THIS DOCUMENT SHALL NOT BE USED OR REPRODUCED WITHOUT THE ORIGINAL SIGNATURE & RAISED SEAL OF FRANK L. BENNARDO, P.E. & MUST HAVE 'ELITE' IN RED ACROSS THE FACE OF THIS DRAWING.

** ALTERATIONS, ADDITIONS, HIGHLIGHTING, OR OTHER MARKINGS TO THIS DOCUMENT ARE NOT PERMITTED AND INVALIDATE OUR CERTIFICATION.

2) THE STRUCTURE SHALL BE FABRICATED IN ACCORDANCE WITH THE REQUIREMENTS OF THE 2009 INTERNATIONAL BUILDING CODE, THE 2009 INTERNATIONAL RESIDENTIAL CODE AND THE FLORIDA BUILDING CODE FIFTH EDITION (2014).

3) COMPOSITE PANELS SHALL BE CONSTRUCTED USING MINIMUM TYPE 3105-H25 ALUMINUM FACINGS, (1) OR (2) PCF ASTM C-578-83 CARPENTER BRAND EPS ADHERED TO ALUMINUM FACINGS WITH ASHLAND CHEMICAL 2020D ISO GRIP. FABRICATION TO BE BY ELITE PANEL PRODUCTS ONLY IN ACCORDANCE WITH APPROVED FABRICATION METHODS.

4) THE EXISTING HOST STRUCTURE MUST BE CAPABLE OF SUPPORTING THE LOADED STRUCTURE AS VERIFIED BY THE PERMIT HOLDER. NO WARRANTY, EITHER EXPRESSED OR IMPLIED, IS CONTAINED HEREIN. ADEQUACY OF HOST STRUCTURE SHALL BE VERIFIED BY A REGISTERED PROFESSIONAL ENGINEER.

5) ENGINEER SEAL AFFIXED HERETO VALIDATES STRUCTURAL DESIGN AS SHOWN ONLY. USE OF THIS SPECIFICATION BY ELITE, et al. INDEMNIFIES AND SAVES HARMLESS THIS ENGINEER FOR ALL COSTS & DAMAGES INCLUDING LEGAL FEES & APPELLATE FEES RESULTING FROM MATERIAL FABRICATION, SYSTEM ERECTION, & CONSTRUCTION PRACTICES BEYOND THAT WHICH IS CALLED FOR BY LOCAL, STATE, AND FEDERAL CODES AND FROM DEVIATIONS OF THIS PLAN.

6) EXCEPT AS EXPRESSLY PROVIDED IN THIS SPECIFICATION, NO CERTIFICATIONS OR AFFIRMATIONS ARE INTENDED.

THIS DOCUMENT IS THE PROPERTY OF FRANK L. BENNARDO, P.E. & SHALL NOT BE REPRODUCED IN WHOLE OR PART WITHOUT WRITTEN CONSENT OF FRANK L. BENNARDO, P.E. (C) FRANK L. BENNARDO, P.E.

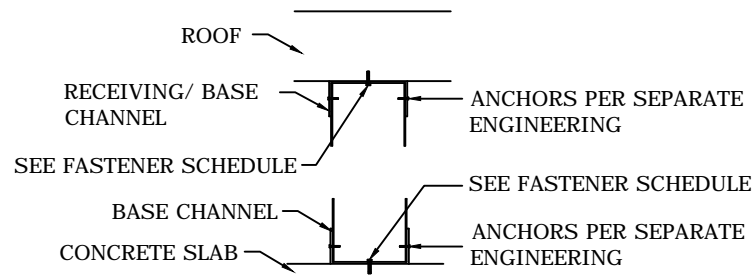
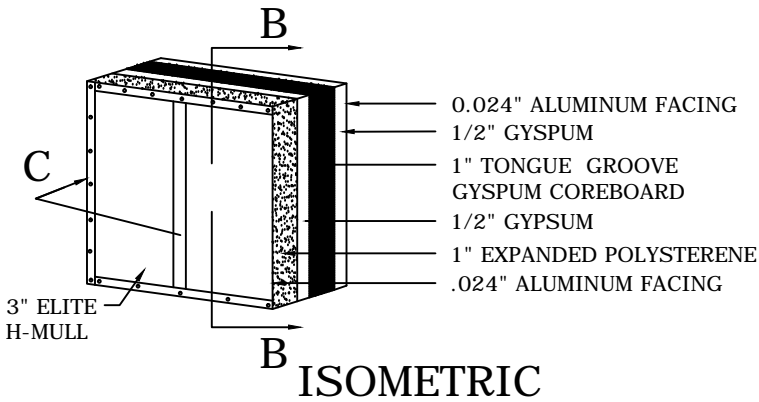
DESIGN INFORMATION

- REF: GA 600-2009 FIRE RESISTANCE DESIGN MANUAL
- GA FILE NO. WP 1311/PAGE 37
- PROVIDES 1 HR FIRE RATING

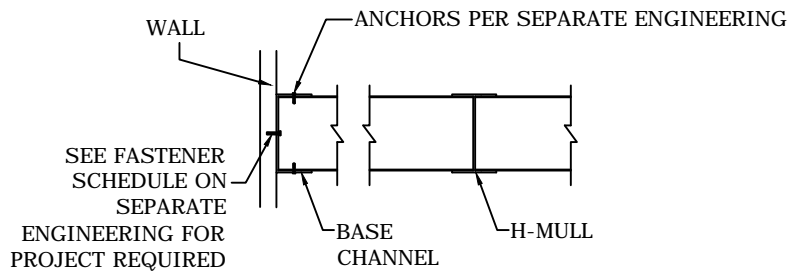
- DOUBLE PANEL FOR 2 HR FIRE RATING

- ALL OTHER WORK TO FOLLOW SEPARATE ENGINEERING PLANS BY THIS ENGINEER CREATED FOR ELITE ALUMINUM WHICH IS TO INCLUDE INFORMATION REGARDING ANCHORAGE AND EXTRUSION INFORMATION.

*THIS DESIGN CERTIFIES STRUCTURAL ANCHORAGE FOR THE SYSTEM SHOWN HEREIN. A 1-HOUR FIRE RATING IS ALLOWABLE PROVIDED THAT GYPSUM MATERIALS COMPLY WITH GA 600-2009 FIRE RESISTANCE DESIGN MANUAL, GA FILE NO. WP 1311/PAGE 37, AND ALL DETAILS SHOWN HEREIN.



NOTE: PANELS TO BE FLUSH WITH CONNECTORS TYP.



NOTE: PANELS TO BE FLUSH WITH CONNECTORS TYP.

REMARKS	DRWN	CHKD	DATE
INIT ISSUE	CSL	TSB	08-18-11
	-	-	-
	-	-	-
	-	-	-
	-	-	-

THIS DOCUMENT IS THE PROPERTY OF ENGINEERING EXPRESS, AND SHALL NOT BE REPRODUCED IN WHOLE OR PART WITHOUT WRITTEN CONSENT OF ENGINEERING EXPRESS. ALTERATIONS, ADDITIONS, OR OTHER MARKINGS TO THIS DOCUMENT ARE NOT PERMITTED AND INVALIDATE OUR CERTIFICATION.

ELITE ALUMINUM CORP.

4650 LYONS TECHNOLOGY PARKWAY
COCONUT CREEK, FL 33073
1-800-421-0682

1 HOUR FILE PANEL DETAIL



CORPORATE OFFICE:
160 SW 12th AVE, SUITE 106
DEERFIELD BEACH, FL 33442

P: (954) 354-0660 F: (954) 354-0443
E: HELLO@ENGINEERINGEXPRESS.COM
ENGINEERINGEXPRESS.COM
CERT OF AUTH #9885

VALID FOR 1 PERMIT ONLY U.N.O.
VALID ONLY WITH ORIGINAL ENGINEER SEAL

IF CHECKED, CERTIFYING P.E. APPEARS IN GENERAL NOTES

FRANK L. BENNARDO, P.E.
PE# 0046549