

# ELITE ROOF/SCREEN WALL MASTER PLAN SHEET

DETAILS NOT SHOWN TO SCALE FOR CLARITY.

6063-T6

18X14 SCREEN MESH

C.T. "GUS" TARNOWSKI  
#PE0050662

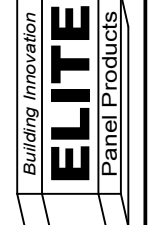


VALID FOR (1) JOB(S) ONLY  
VALID ONLY WITH RAISED ENGINEER SEAL



ENGINEERING BUSINESS CA 00009677  
ELITE ALUMINUM CORPORATION  
4650 LYONS TECHNOLOGY PARKWAY  
COCONUT CREEK, FL 33073

CIVIL & STRUCTURAL ENGINEERING  
Phone (954) 727 - 2027  
Fax (954) 727 - 9644  
7360 N.W. 5th Street  
Plantation, FL 33317



ELITE ROOF-SCREEN MPS

DRWN	CHKD	DATE
WTF		07/01/15
ISSUE		
REMARKS	FBC2014	

THIS DOCUMENT IS THE PROPERTY OF TARNOWSKI ENGINEERING, INC. IT IS TO BE USED ONLY FOR THE PROJECT AND SITE SPECIFICALLY IDENTIFIED HEREIN. ANY REUSE, ALTERATION, REPRODUCTION, OR DISTRIBUTION OF THIS DOCUMENT WITHOUT THE WRITTEN CONSENT OF TARNOWSKI ENGINEERING, INC. IS STRICTLY PROHIBITED. ADDITIONS, HIGHLIGHTING, OR OTHER MARKINGS TO THIS DOCUMENT ARE NOT PERMITTED AND INVALIDATE OUR CERTIFICATION.

COPYRIGHT TARNOWSKI ENGINEERING, INC.

00-EAC-1003

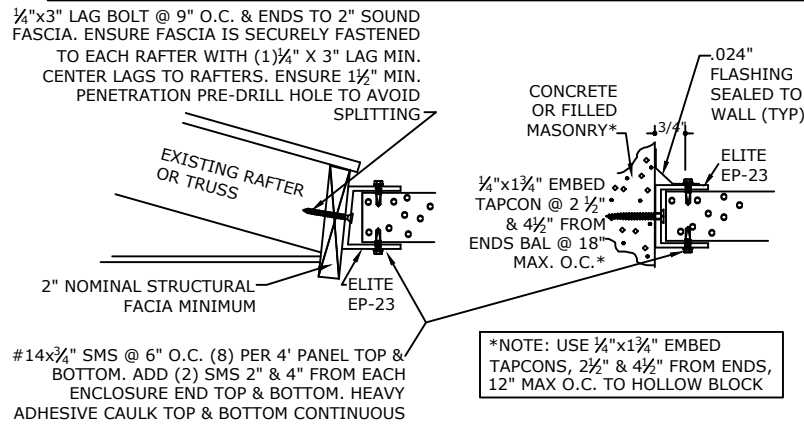
SCALE: N.T.S. 01  
PAGE DESCRIPTION:

1

C. TARNOWSKI, P.E.

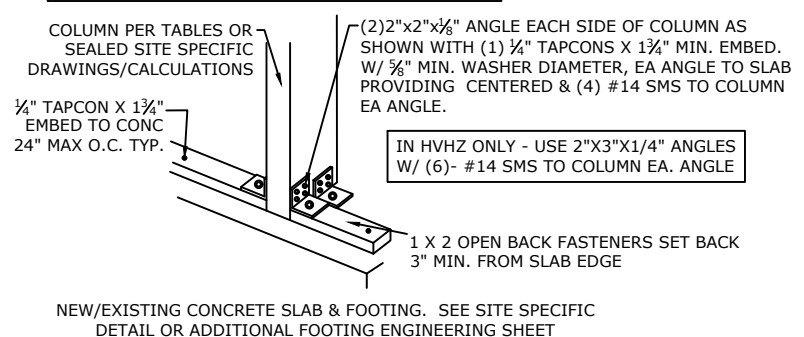
## A CONNECTION TO STRUCTURE: WOOD OR CONCRETE

\*\*SEE GENERAL NOTE #10 FOR DESIGN PARAMETERS & S2 FOR ALTERNATE CONNECTIONS



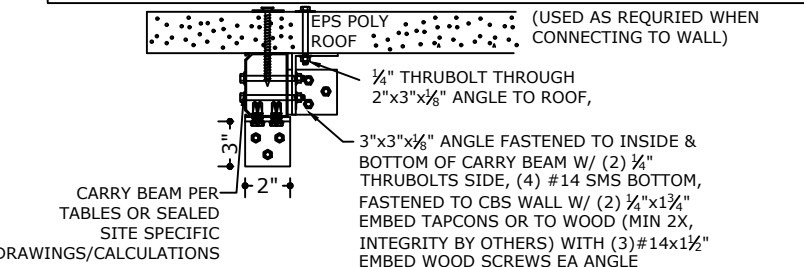
## B ENCLOSURE TO CONCRETE DECK ANCHORING DETAIL

\*\*SEE GENERAL NOTE #10 FOR DESIGN PARAMETERS



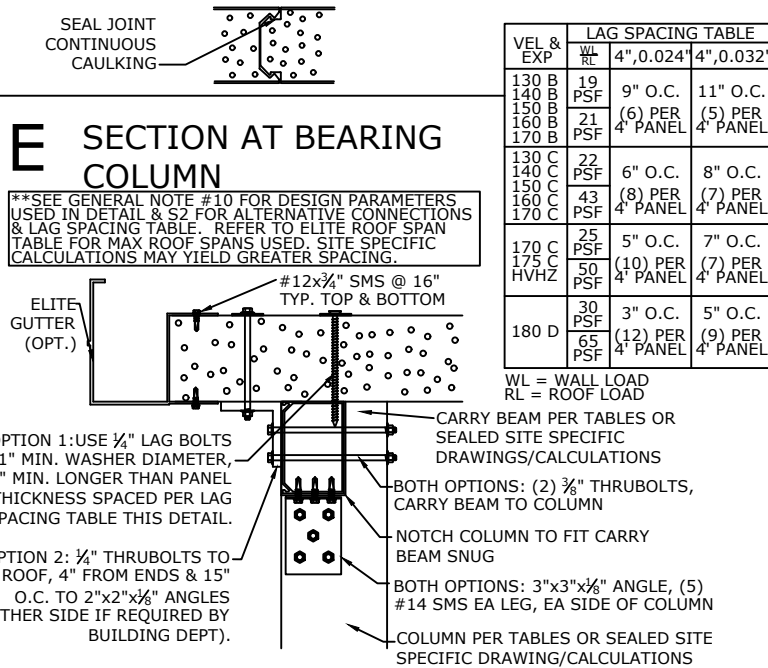
## C EAVE BEAM CONNECTION @ WALL

\*\*SEE GENERAL NOTE #10 FOR DESIGN PARAMETERS & S2 FOR ALTERNATE CONNECTIONS

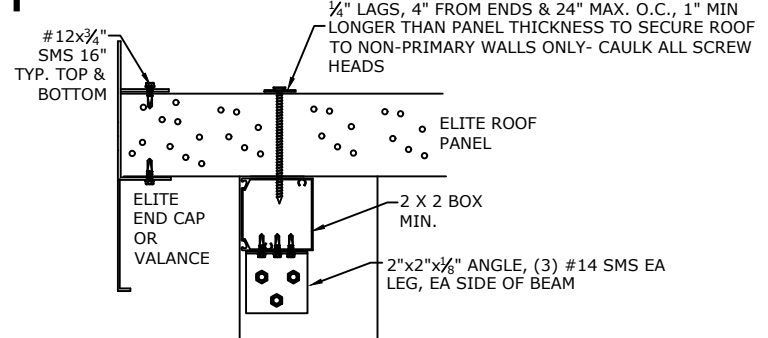


## D ROOF PANEL CONNECTION FRONT ELEVATION

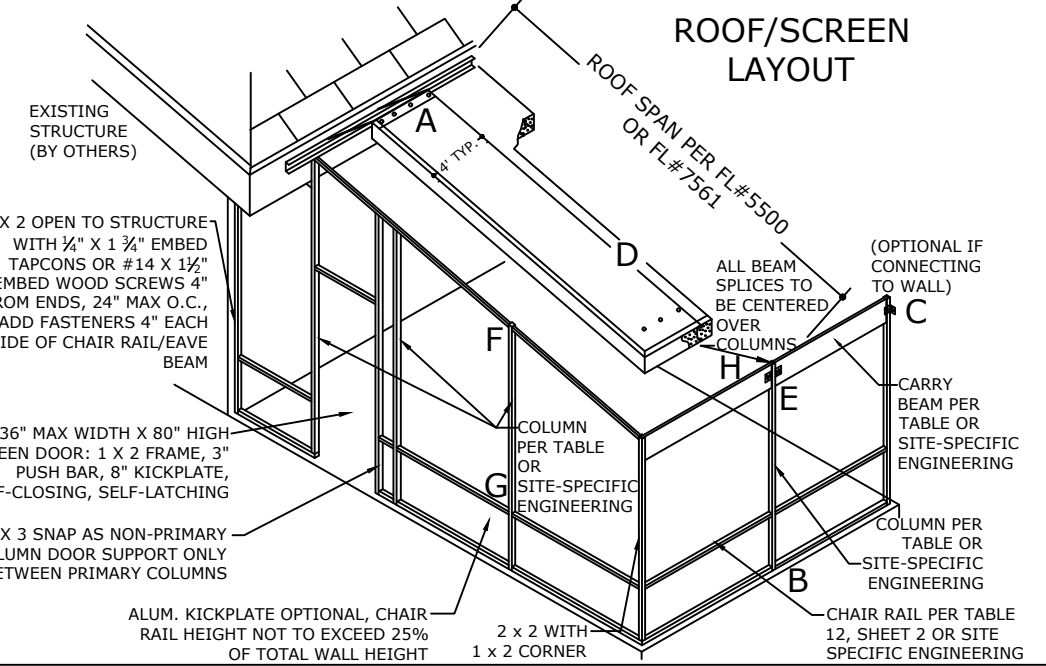
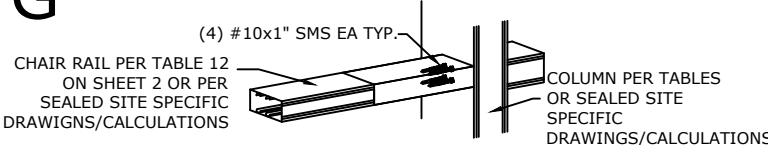
ROOF SPAN FROM TABLE, MIN ROOF PITCH IS 1/4" PER 12", MAX IS 2" IN 12"



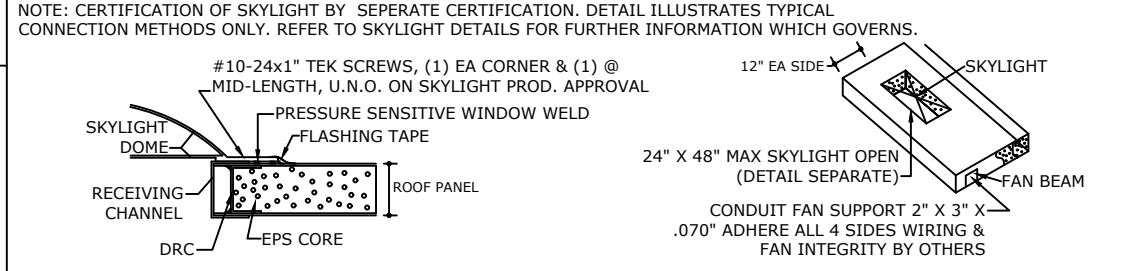
## F SECTION AT SIDE OF ROOF PANEL



## G TYP. BEAM TO CHAIR RAIL



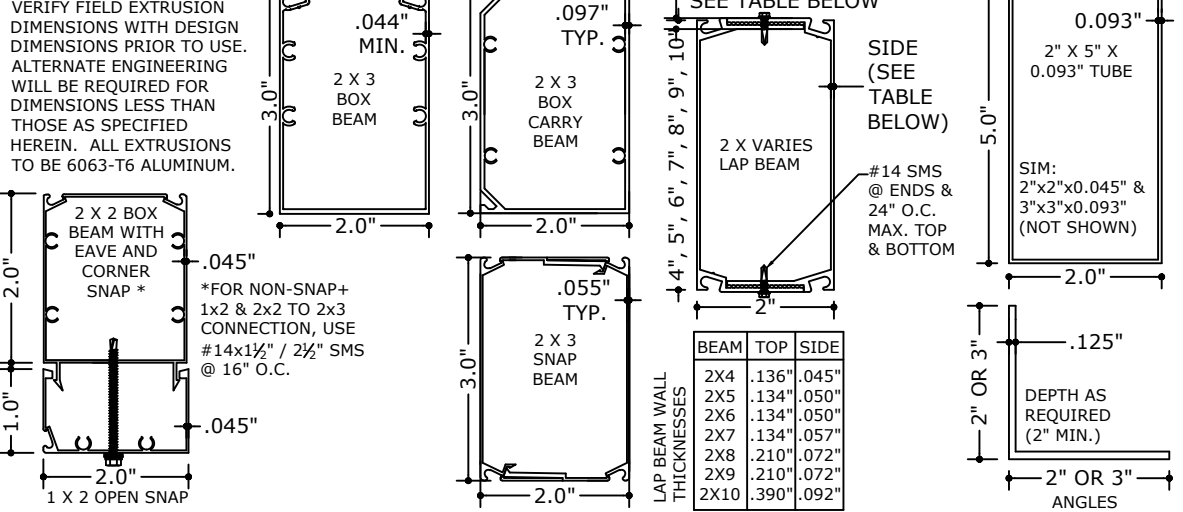
## ROOF PANEL ACCESSORIES:



## GENERAL NOTES:

- THIS STRUCTURE HAS BEEN DESIGNED & COMPLIES WITH THE REQUIREMENTS OF THE 2014 FLORIDA BUILDING CODE. STRUCTURE SHALL BE FABRICATED IN ACCORDANCE WITH ALL GOVERNING CODES. CONTRACTOR SHALL INVESTIGATE AND CONFORM TO ALL LOCAL BUILDING CODE AMENDMENTS WHICH MAY APPLY. DESIGN CRITERIA OR SPANS BEYOND STATED HEREIN MAY REQUIRE ADDITIONAL SITE SPECIFIC SEALED ENGINEERING. ALL LOADS BASED ON SCREENS WITH 18X14 MESH, CATEGORY I, Kd=0.85, PARTIALLY ENCLOSED (Gcpi= +/-0.55), 15' MRH PER FBC TABLE 2002.4(1), CATEGORY II PER AAMA/NPEA/NSA 2100-02, AND ASCE 7-10 AS APPLICABLE.
- THIS DOCUMENT SHALL NOT BE USED OR REPRODUCED WITHOUT THE ORIGINAL SIGNATURE & RAISED SEAL OF C.T. "GUS" TARNOWSKI, P.E. & MUST HAVE 'ELITE' IN RED ACROSS THE FACE OF THIS DRAWING. ALTERATIONS, ADDITIONS, HIGHLIGHTING, OR OTHER MARKINGS TO THIS DOCUMENT ARE NOT PERMITTED AND INVALIDATE OUR CERTIFICATION.
- THE EXISTING STRUCTURE MUST BE CAPABLE OF SUPPORTING THE LOADED COMPOSITE ROOF-SCREEN WALL STRUCTURE AS DETERMINED BY OTHERS OR BY SPECIAL ENGINEERING BY UNDERSIGNED ENGINEER ATTACHED HERETO. NO WARRANTY IS CONTAINED HEREIN.
- COMPOSITE ROOF AND WALL MEMBERS SHALL BE CONSTRUCTED USING MINIMUM TYPE 3005-H25 ALUMINUM FACINGS, (1) OR (2) PCF ASTM C-578-83 CARPENTER BRAND EPS ADHERE TO ALUMINUM FACINGS WITH ASHLAND CHEMICAL 2020D ISO GRIP. FABRICATION TO BE BY ELITE PANEL PRODUCTS ONLY IN ACCORDANCE WITH APPROVED FABRICATION METHODS.
- ALL EXTRUSIONS SHALL BE ALUMINUM ALLOY TYPE 6063-T6 ONLY.
- ALL FASTENERS TO BE 2024-T4 OR 7075-T73 ALLOY, NON-MAGNETIC STAINLESS STEEL, SAE GRADE 5 STEEL MIN, OR CADMIUM PLATED OR OTHER CORROSION RESISTANT MATERIAL AND SHALL COMPLY WITH SECTION 5, 2010 ALUMINUM DESIGN MANUAL, THE ALUMINUM ASSOCIATION, INC., & APPLICABLE FEDERAL, STATE, AND LOCAL CODES.
- FASTENERS SHALL HAVE A 1/2" DIA. HEAD OR BE PROVIDED WITH 1/2" DIAMETER WASHER MINIMUM UNLESS NOTED OTHERWISE.
- ALL CONNECTIONS SHALL BE BOLTED OR FASTENED WITH SHEET METAL SCREWS AS SHOWN AND IN ACCORDANCE WITH PROPER FASTENING METHODS AND CODES. ANY FASTENER STRIPPED OR NOT ADEQUATELY HOLDING SHALL BE REPLACED.
- THE CONTRACTOR IS RESPONSIBLE TO INSULATE ALUMINUM MEMBERS FROM DISSIMILAR METALS TO PREVENT ELECTROLYSIS.
- ALL TAPCONS MUST BE ITW CARBON STEEL TAPCONS OR EQUIVALENT W/ 1/4" EMBED, 3" MIN. EDGE DISTANCE, FASTENED TO MINIMUM 2500PSI CONCRETE.
- MAXIMUM COLUMN SPACING = 8FT, MAX COLUMN HEIGHT = 10FT, MAX LIVE LOAD = 65PSF, MAX WIND VELOCITY & EXPOSURE = 180MPH, 'D', CONNECTIONS VALID UP TO THE MAX 6IN. THICK ROOF SPAN PER ELITE ROOF FLORIDA STATEWIDE APPROVED SPAN TABLE. SITE SPECIFIC ENGINEERING REQUIRED FOR ANY DETAIL WHICH DEVIATES FROM THIS PLAN OR BEYOND THESE LIMITATIONS.
- ENGINEER SEAL AFFIXED HERETO VALIDATES STRUCTURAL DESIGN AS SHOWN ONLY. USE OF THIS SPECIFICATION BY CONTRACTOR, et al. INDEMNIFIES AND SAVES HARMLESS THIS ENGINEER FOR ALL COSTS AND DAMAGES INCLUDING LEGAL FEES AND APPELLATE FEES RESULTING FROM MATERIAL FABRICATION, SYSTEM ERECTION, AND CONSTRUCTION PRACTICES BEYOND THAT WHICH IS CALLED FOR BY LOCAL, STATE, AND FEDERAL CODES AND FROM DEVIATIONS OF THIS PLAN.
- EXCEPT AS EXPRESSLY PROVIDED IN THIS SPECIFICATION, NO ADDITIONAL CERTIFICATIONS OR AFFIRMATIONS ARE INTENDED.

## EXTRUSIONS:



## H BEAM SPLICE OVER COLUMN

